

Gateway West Segment E and E-8 Transmission Line Projects

Canyon County Commissioners
August 16, 2023
In-person Meeting



Introductions



Agenda

- Introductions
- Gateway West Program Overview
- Gateway West Segment E/E-8 Projects
- Project Schedule and Future Milestones
- Next Steps
- Questions

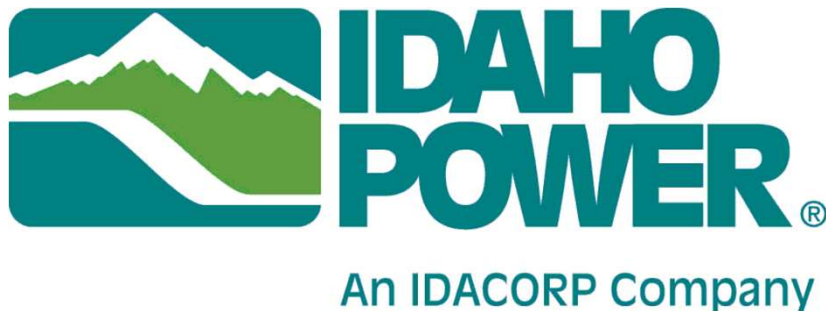


Gateway West Program Overview

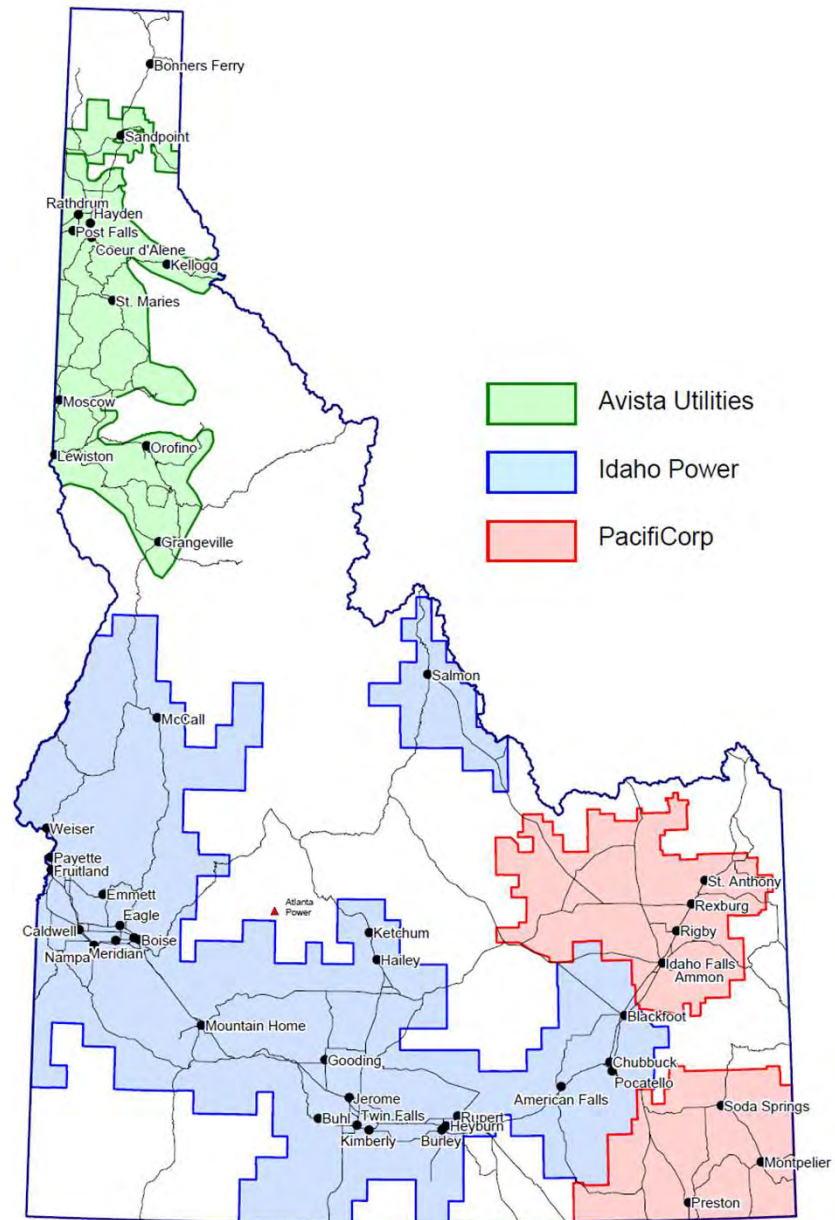
Gateway West is a joint project between Idaho Power and PacifiCorp to build and operate approximately 1,000 miles of new high-voltage transmission lines in Idaho and Wyoming including 3.33 miles through Canyon County.

The Project will:

- Strengthen the electric reliability of the transmission system; reduce outages.
- Provide critical voltage support to the transmission network.
- Reduce line losses while doing so at reasonable costs for customers today and well into the future.
- Enhance the companies' ability to comply with government mandated standards.
- Enhance opportunities for future commercial development.
- Provide tax benefits during construction for materials delivered within the county and increase sales tax base during the length of the project.

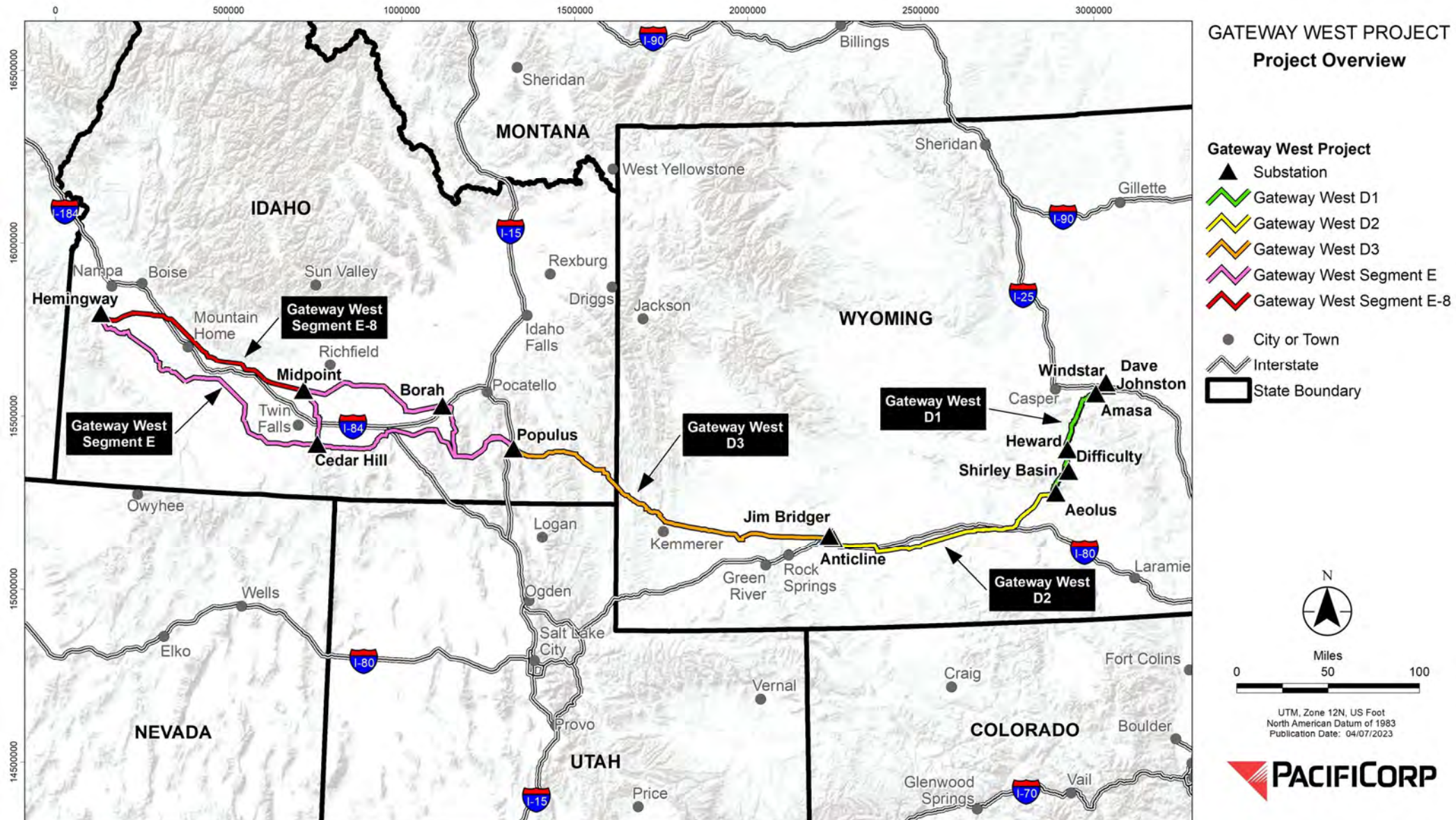


Service Area Overview

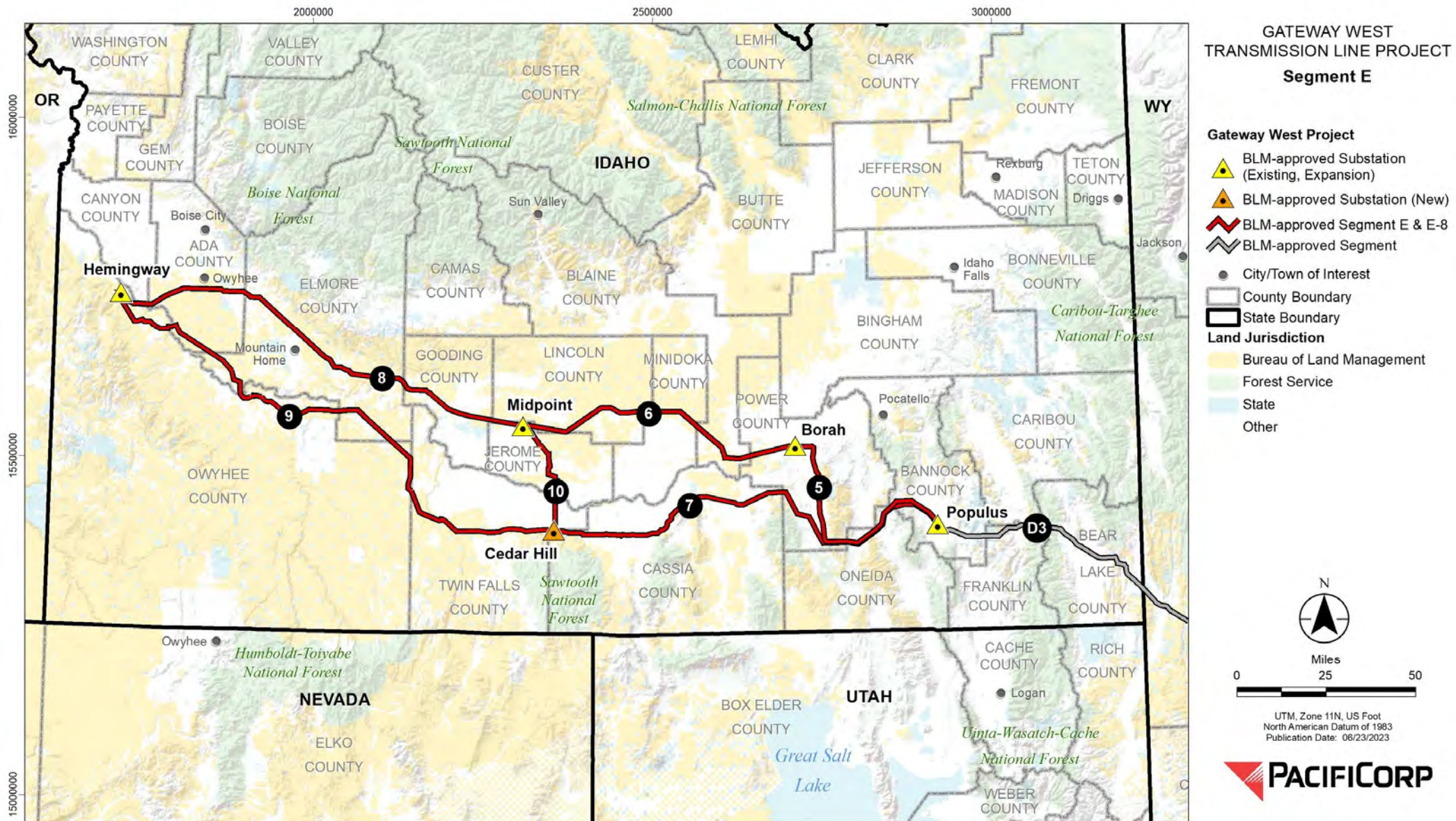


Source: Idaho Public Utilities Commission

Gateway West Program Overview



Gateway West Segment E/E-8 Projects



Gateway West Segment E/E-8 Projects

- The Gateway West Segment E and E-8 routes were designed and studied in depth during the National Environmental Policy Act (NEPA) process
 - NEPA requires federal agencies to assess the environmental effects of their proposed actions prior to making decisions.
 - Ex: new construction on federal lands, issuing a lease to occupy federal lands, issuing a grant for federal dollars
 - The routes studied during NEPA represent the indicative centerline only
 - On federal lands this is the basis for Idaho Power's and PacifiCorp's ROW grant from BLM, obtained in 2013 and 2018
 - On private lands this represents a starting point for further studies and conversations with landowners as we work to refine the route.
 - Minor refinement within our previously studied corridor is referred to as micrositeing.
 - Major refinement outside previously studied corridor may require further NEPA analysis.
- As we perform additional studies and meet with landowners the route may lead to minor changes.



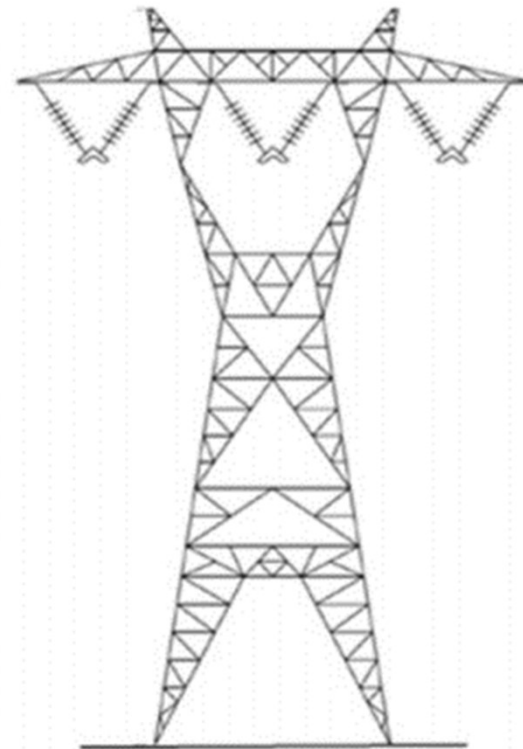
Source: U.S. Department of the Interior

Project Description

- 616 miles of new 500kV transmission line
 - Includes 85 miles of existing 345kV line to be re-energized at 500kV (Segment 6)
- ROW width 250 feet
- Self-supporting steel lattice structures
- Access to the structures will require use of both existing and proposed new access – a combination of temporary (used during construction) and long-term access (required for operations and maintenance)
- Multi-purpose areas will be utilized temporarily during construction
- Substations to be upgraded/expanded:
 - Populus (Downey, ID)
 - Borah (near American Falls, ID)
 - Midpoint (Jerome, ID)
 - Hemingway (near Melba, ID)
- Substation to be constructed – Cedar Hill (near Hansen, ID)
- 2 signal regeneration stations each for Segments 7 and 9; 3 regeneration stations for Segment 8

Structures

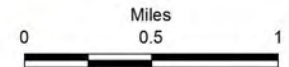
- Proposed Design:
 - Steel lattice
 - Dull galvanized
 - Average height 145 to 180 feet
 - Average span of 1200 to 1300 feet



Canyon County Map

GATEWAY WEST TRANSMISSION LINE PROJECT SEGMENT E Canyon County

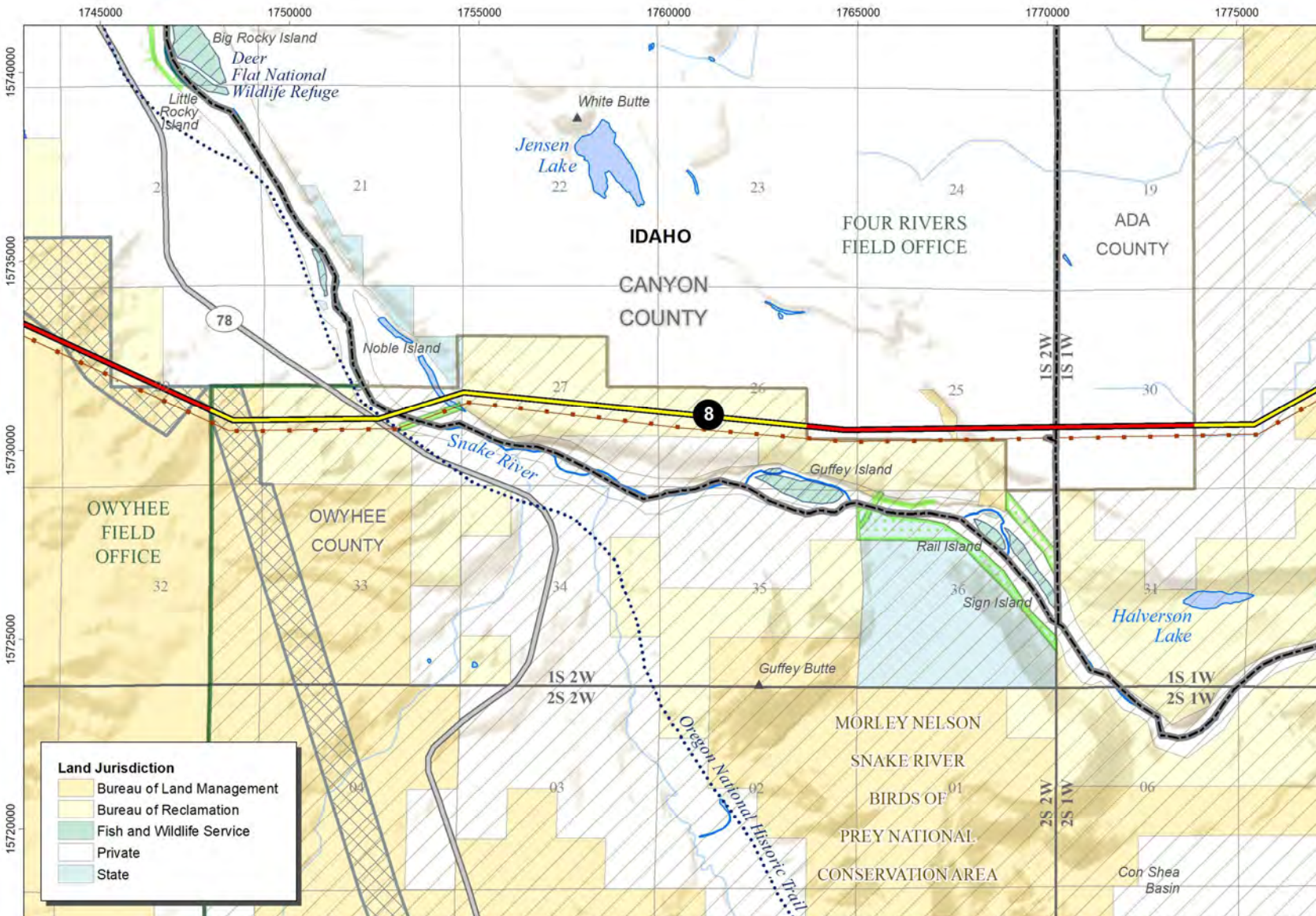
- Gateway West Segment E**
- BLM-approved Segment E Route Alignment
 - Segment E Approved Statutory ROW
 - Electric Transmission Line, Existing
 - Oregon National Historic Trail
 - River, Major
 - Other Waterway
 - Secondary State or County Highway
 - BLM Field Unit Boundary
 - County Boundary
 - Lake or Reservoir, Major
- Land Designation**
- Conservation Easement
 - National Conservation Area
 - National Wildlife Refuge
- Public Land Survey System**
- Township Boundary
 - Section Boundary
 - Section 368 Energy Corridor



UTM, Zone 11N, US Foot
North American Datum of 1983
Publication Date: 07/17/2023



- Land Jurisdiction**
- Bureau of Land Management
 - Bureau of Reclamation
 - Fish and Wildlife Service
 - Private
 - State

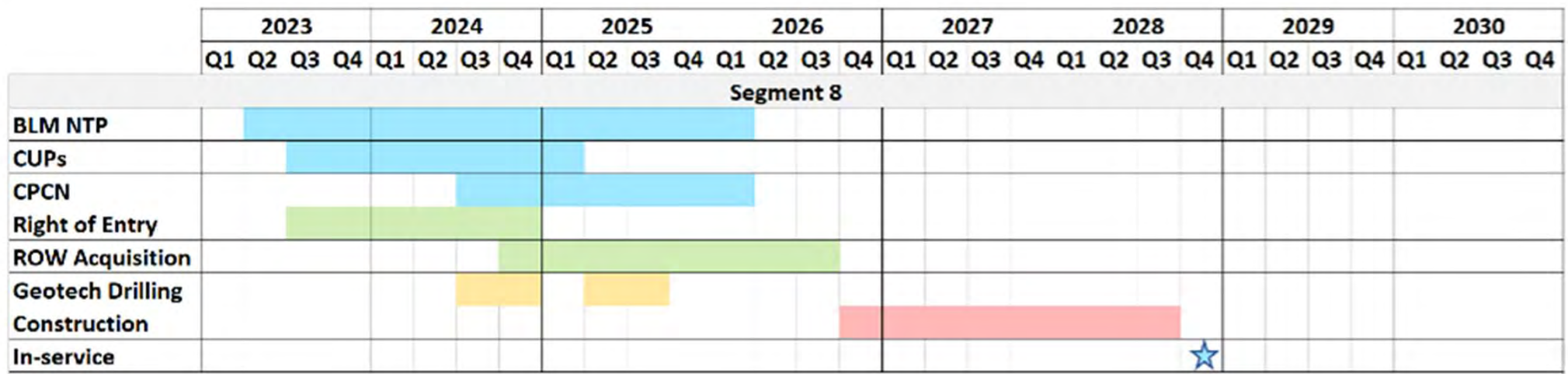


Gateway West will parallel an existing 500kV line, minimizing new impacts on landowners.

Canyon County Mileage

| | BLM Land (miles) | Privately- Owned (miles) | State Land (miles) | Bureau of Reclamation | Undetermined (miles) | Total (miles) |
|--------------------------|---------------------|--------------------------------|-----------------------|--------------------------|-------------------------|------------------|
| Segment 8 | 0.05 | 1.39 | 0.04 | 1.74 | 0.12 | 3.33 |
| Canyon County | 0.05 | 1.39 | 0.04 | 1.74 | 0.12 | 3.33 |

Project Schedule and Future Milestones



★ = Predicted In-service

Next Steps

- Initiate right of entry contact with private landowners to complete necessary studies
- Continue working with Canyon County Planning Department, as needed
- Continue to work with the Bureau of Land Management to meet Record of Decision requirements for issuing a Notice to Proceed to construct
- Provide updates to County Commissioners 3x annually

Questions?

Project contacts for additional questions:

- **Roger Yensen:** PacifiCorp Project Manager – Pre-construction/Construction (Project Point of Contact)
 - P: (385) 481-2971 E: Roger.Yensen@pacificorp.com
- **Rachel Roberts:** PacifiCorp Pre-Construction Project Manager (Project Point of Contact)
 - P: (757) 298-4234 E: Rachel.Roberts@pacificorp.com
- **Tami Moody:** PacifiCorp Local Permitting Project Manager (Project Point of Contact)
 - P: (801) 220-2217 E: Tami.moody@pacificorp.com
- **Nancy Smith:** PacifiCorp Senior Technical Advisor/Pre-construction
 - P: (719) 278-1300 E: Nancy.Smith2@pacificorp.com
- **Lindsay Barretto:** Idaho Power 500kV/Joint Projects Senior Manager
 - P: (208) 388-5584 E: Lbarretto@idahopower.com
- **Mike Ybarguen:** Idaho Power Economic and Community Development Advisor
 - P: (208) 465-8653 E: MYbarguen@idahopower.com