

June 14, 2024

To: Board of Canyon County Commissioners  
From: Canyon County Historic Preservation Commission (HPC)  
Re: **Historic Preservation Fund FY2025 Grant Recommendations**

**Background:** The Canyon County Board of Commissioners (BOCC), by resolution, re-established the Canyon County Historic Preservation Commission (HPC) in January 2013. The HPC is an advisory board in matters pertaining to historic preservation in Canyon County.

**Advisory Board Membership:** A diverse and remarkable group appointed by the BOCC, the members usually include: attorneys, anthropologists, archaeologists, architects, historians and historic preservationists, all having one thing in common: an interest in preserving our cultural resources as educational opportunities for the future.

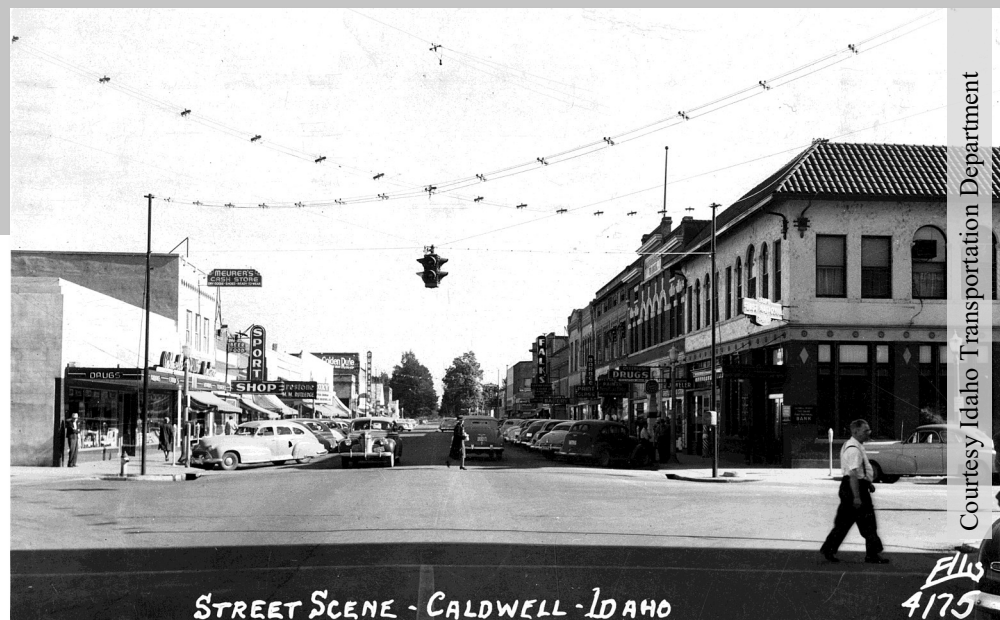
**Canyon County Historic Preservation Commission Members Include:**

- George DeFord, Jr.**, Owner and Attorney at DeFord Law
- Nikki Gorrell**, College of Western Idaho, Associate Professor of Anthropology
- Bruce Poe**, Modus Architecture Collaborative, Principal Architect
- Vicki Stark**, Member, Shoshone-Paiute Duck Valley Tribe - Archaeologist
- Dr. Justin Vance**, College of Western Idaho, Dean, School of Arts and Humanities
- Zach Wesley**, Civil, Prosecuting Attorney
- Chelsee Boehm**, Historic Preservation Officer, Canyon County Parks, Cultural & Natural Resources

**Certified Local Government (CLG):** Canyon County is a CLG – a program provided through an amendment to the National Historic Preservation Act of 1966. The CLG designation gives local governments a specific, formal role in historic preservation. There are a few benefits to participating in the CLG, not the least of which is: the ability to take advantage of the experience at our **Idaho State Historic Preservation Office (SHPO)**; and to be eligible to apply for grants each year from the SHPO – federal dollars that they receive from the **National Park Service**.

**Canyon County Historic Preservation Grant Award Program:** A unique responsibility/duty of the Canyon County HPC, under the direction of the Board of County Commissioners, is the recommendation and administration of the Canyon County Historic Preservation Grant Award Program. This program funds qualified, non-profit organizations in Canyon County who have a mission of conservation, protection and maintenance of historic objects, information or properties. Canyon County sets aside a sliver (*no more than twelve one-thousandth of a percent, or <.012%*) of property tax revenue dedicated to a grant award program for historic preservation projects every year.

*Idaho Code § 31-864 grants the boards of county commissioners in their respective counties authority to levy not more than twelve one-thousandths percent (.012%) on each dollar of market value for assessment purposes of taxable property within the County for the support of county historic societies and historic preservation projects.*



In general, the Historic Preservation tax levy funds can go to:

- (1) Support of historical societies which operate primarily within the county; or
- (2) Support of museums operated within the county; or
- (3) Support of historical restoration projects undertaken within the county; or
- (4) Marking and development of historic sites within the county.

**Grant Application Review:** Applications are reviewed to ensure that each meets the qualifications for the historic preservation levy. Applicants are required to provide proof of 501(c)(3) or nonprofit status. They are also required to provide proof of ownership of project property when the project involves physical improvements to a building, structure or facility. This helps ensure that awards are not given to projects under bank loans that could possibly default. Each project is strongly encouraged to provide financial estimates/bids, letters of commitment for maintenance and long-term sustainability of the project, letters of commitment for grant matches, letters of support, drawings/plans, and photos. The review process provides the HPC a chance to ask questions about the proposal, allow for clarifications, or request additional information before the final recommendations are made.

**Grant Application Evaluation:** HPC members evaluate the applications based on answers to the following ten questions:

1. How does this project address a historic preservation issue in Canyon County?
2. Describe the urgency of this project due to potential resource damage or other impacts that may cause an opportunity to be lost.
3. Describe the project. Include drawings, plans, photos, schedules, proof of ownership of the project property, and compliance with applicable laws (American with Disabilities Act, National Environmental Policy Act and Uniform Building Code, etc.)
4. How did you plan this project? (Did you use consultants? Who are the consultants and their qualifications? Did you get financial bids/quotes? Do you have applicable training pertaining to the project?)
5. Why is the project needed and how does it benefit the citizens of Canyon County?
6. If this application is part of a multi-year, phased project please include information about the use of past award funds and include a complete and detailed plan of future phases and financial needs through to project completion with an anticipated time-line of these phases. (Describe the long-term plan and requirements of this project.)
7. Will a fee be charged to the public to use your project when completed? If yes, explain.
8. How will the resulting project be available to the citizens of Canyon County? (What is the availability plan? How often will it be available? How will people be made aware that it is available?)
9. If your project is located within a museum or restricted facility, please answer the following questions:
  - Regular Hours of Operation?
  - Total Hours per year the facility is available to the public?
  - Number of visitors per year?
  - How is availability publicized?
10. If this application is one of multiple applications, please indicate the priority of the application: 1<sup>st</sup>, 2<sup>nd</sup>, 3<sup>rd</sup>, 4<sup>th</sup>

**We acknowledge that each of these proposed projects are important. However, we understand that it may not be possible to fund all requests. The HPC has ranked each application according to the priority levels *urgent, high, medium, and low*. These priority rankings are designated on each page. We hope they will assist in informing decision making.**

## **FY2025 Historic Preservation Grant Applications and Commission Recommendations:**

The Canyon County Historic Preservation Commission (HPC) received and reviewed nine applications from eight different agencies requesting fiscal assistance for a total of \$139,180.

Recommended Applications in alphabetical order:

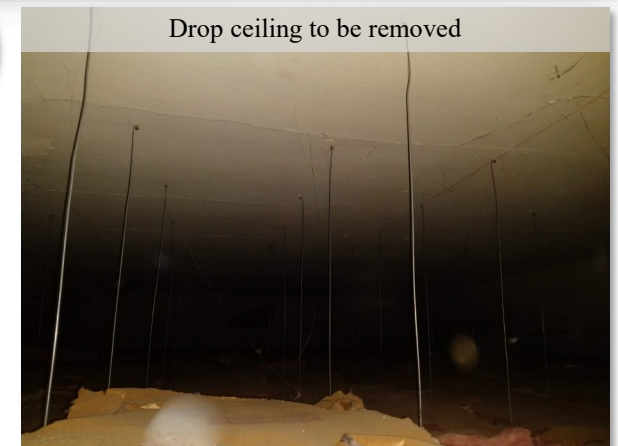
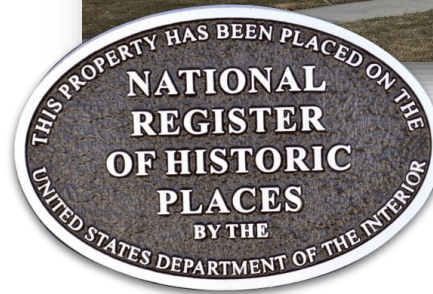
### **American Legion, Joseph H. Murray Post 18**

One application requesting funds to repair main hall and restore stage of American Legion Post 18 building in Nampa.

#### **Main Hall Sanctuary Ceiling and Stage Restoration**

**Requested: \$39,700      Recommended: \$39,700**

- Constructed in 1931, this building is on the National Register of Historic Places. Significant for its Tourtellotte and Hummel Architecture, it is part of a thematic resource group (139 sites representing the firm).
- Repair and restoration of the building has been ongoing. Hummel Architects, the descendant of the original architecture firm that designed the building, created a preservation plan for the building. Work on the building began with receipt of HPC grant in FY2021.
- Applicants estimate that nearly 3000+ people visit the building every year.
- Cracks in the ceiling plaster, due to age, present a safety hazard for building users and community members.
- Requesting funds to remove ceiling grids and lower wall paneling. Walls and ceiling will then be patched and textured to match historic requirements. Funds will also be used to install chandeliers matching those in the auxiliary room.



**Ranked Priority: URGENT**

# Canyon County Historical Society

**\*Late Application**

One application requesting funds to restore both bathrooms to resemble their original 1900s look.

## **Nampa Train Depot Museum Bathrooms Restoration Project**

**Requested: \$10,400**

**Recommended: \$10,400**



Photo by Greg Harness



- The Nampa Train Depot, first used on September 25, 1903, is listed on the National Register of Historic Places for its significance in transportation as part of the Oregon Short Line and its architectural style as ‘an interesting eclectic combination of Romanesque Renaissance and Baroque elements.’
- Now over 120 years old, the Canyon County Historical Society board has been working to implement a building improvement plan to care for the building.
- Requesting funds to transform two bathrooms, updated in the 1960s, to closely match their original 1900s design.
- Application states that the size of the bathrooms prohibits them from creating ADA compliant restrooms.

**Ranked Priority: LOW**



Current state of bathrooms



## Historical Society of Middleton

One application requesting funds to repaint and replace doors and add gutters to the Lee Moberly Museum.

### Lee Moberly Museum Door Repair and Gutter Addition

**Requested: \$6,700**

**Recommended: \$6,700**



- The Historical Society of Middleton (HSM) was formed in 2013 to create a Middleton history museum.
- Museum is housed in a 1912 structure built by Idaho Power to convert electricity from Swan Falls Dam for residential and commercial use. Building was placed on the National Register of Historic Places in 1973.
- In part with assistance from funding from Canyon County HPC, the society renovated the building, created exhibits, and opened the museum to the public.



Back door in need of replacement



- Requesting funds to replace back door, repaint front door and add gutters to the building.
- HSM proposes to match with funds to cover the remaining costs, estimated to be approximately \$560.

**Ranked Priority: HIGH**

## Idaho Civil War Volunteers

One application requesting funds to purchase a carriage for a Model 1841 Mountain Howitzer used at demonstrations and events.

### **Cannon Carriage for a Model 1841 Mountain Howitzer**

**Requested: \$8,300**

**Recommended: \$8,300**



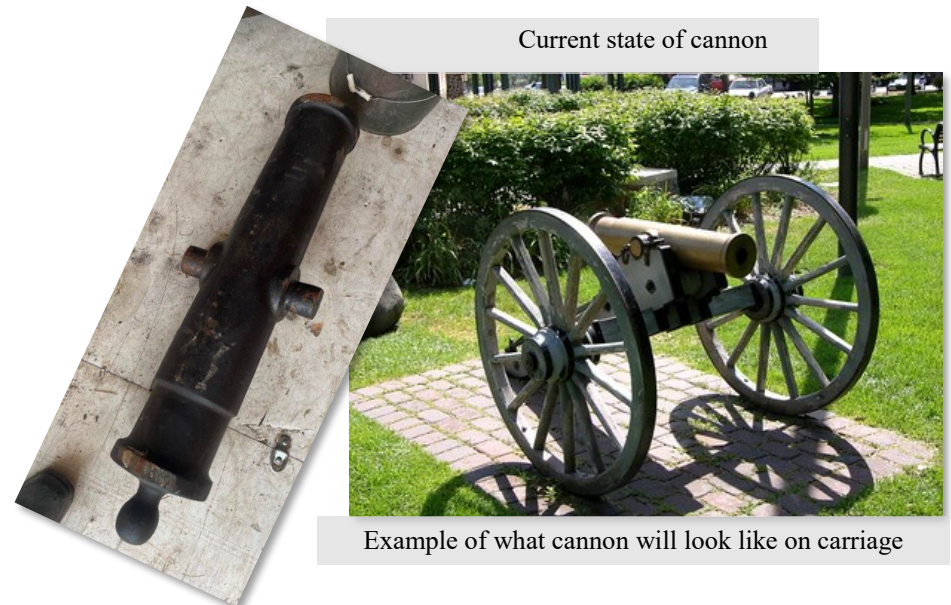
- Idaho Civil War Volunteers (ICWV) is a “group of educational volunteers who are passionate about history and eager to share their knowledge with the public.” They provide education programs about the history of the American Civil War and 1800s America.
- The ICWV participate in events throughout the Treasure Valley and Canyon County. Recent events in Canyon County include Nampa Train Depot Museum Comes to Life and Fort Boise Days in Parma. Members also visit schools in Canyon County. Major event is Civil War Days in Eagle Island State Park, with school children attending from all over southern Idaho
- Requesting funds to purchase a carriage for an otherwise operational Model 1841 Mountain Howitzer. Volunteers were then be able to safely use the cannon for demonstrations.

**Ranked Priority: LOW\***

### ***\*Concerns about application meeting requirements\****

- (1) Support of historical societies which operate primarily within the county; or
- (2) Support of museums operated within the county; or
- (3) Support of historical restoration projects undertaken within the county; or
- (4) Marketing and development of historic sites within the county.

Does not meet 2, 3 or 4. It is close to meeting 1. Project could potentially partner with another organization in Canyon County, like Fort Boise, to host a specific event that could qualify as support of museums under part 2.



## Melba Valley Historical Society

Two applications requesting funds to upgrade exterior electricity and repaint the exterior of the Melba museum.

<b>1. Exterior Electrical Upgrade</b>	<b>\$4,450</b>
<b>2. Exterior Paint</b>	<b>\$9,500</b>

**Requested: \$13,950      Recommended: \$13,950**

- The Melba Valley Historical Society operates the Melba Valley Museum, housed in the former Gardner Hotel/International Order of Odd Fellows (IOOF) building. Constructed in 1919 as a hotel, the building was purchased by IOOF Lodge #150 in 1927. Transferred to the IOOF's allied women's group, the Rebekahs, in 1996, the building was given to the Melba Valley Historical Society for housing a local history museum.
- Previous Canyon County HPC grants helped to fund restoration of the only remaining hotel room, as well as improvements to interior lighting and building insulation,
- With funding from Canyon County HPC, the building was recently placed on the National Register of Historic Places. The only building in Melba.
- Requesting funds to #1 upgrade exterior electrical to allow for the installation of lights to facilitate outdoor events and potential exhibits.
- Requesting funds #2 to repaint exterior of building

**#1 Priority Ranking: MEDIUM**

**#2 Priority Ranking: HIGH**



New exterior space for events



Current condition of exterior section

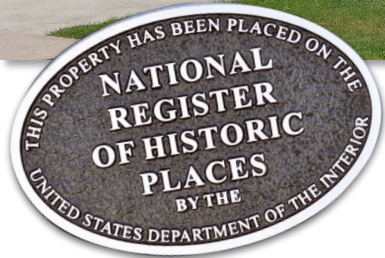
# Nampa Valley Grange

One application requesting funds to begin restoration of the Nampa Valley Grange 131 building.

## Nampa Valley Grange 131 Restoration Project (Year 1)

**Requested: \$37,000**

**Recommended: \$37,000**



In consultation with the Idaho State Historic Preservation Office, the HPC has ranked this project as the first priority for funding, due to the level of damage and the imminent threat it poses to the continued life of the building.

- Constructed in 1912, the Nampa Valley Grange Hall was originally an Episcopal Parish. Relocated to its current location in 1940, the Nampa Valley Grange is one of the few surviving Grange buildings in the Treasure Valley. It is the only one with a stage and an open hall.
- The Grange is used by the public and often serves as an affordable/free place for community nonprofit fundraisers.
- Requesting funds for removing and replacing shingles and underlayment waterproof barrier, remove and repair rotted soffits, repair portions of fascia, replace leaking roof vents, and caulk plumbing vents.
- This is the first application in a planned multi-year project. In the future, the Grange hopes to ask for funds to continue to make the building weather tight.
- In addition to money from the HPC, the Grange will be fund raising. They have committed to a match of \$5,000.

**Ranked Priority: URGENT**



Current damage to the building



## Snake River Canyon Scenic Byway

One application requesting to funds to research and produce a free audio tour and roadside signage to be placed at points of interest along the Snake River Canyon Scenic Byway.

### Audio Tour/Signage of Historical Sites and Points of Interest on Byway

Requested: \$13,130

Recommended: \$13,130

- The Snake River Canyon Scenic Byway (SRCSB) is 53 miles along Idaho Highway 45, from Walters Ferry to Nyssa, OR.
- In 2009, SRCSB Board commissioned a Corridor Management Plan, identifying seven potential areas to be preserved along the Byway: including Map Rock, Pump Road Overlook, Fort Boise, Hat Butte, old ferry locations, and historical cemeteries.
- With increased growth and development in the area, SRCSB seeks to raise awareness of such sites and help encourage understanding of their historical value.
- SRCSB Board is planning to create a GPS audio tour of the Byway. Completed audio tour will include twenty-five topics, **eleven are historic sites/features**.



### Snake River Canyon Scenic Byway

**Payette** was established in 1891 and honors François Payette, an early fur trapper. Abundant crops of fruit, onions, corn and potatoes are produced in this area rich in agricultural heritage.

**Fruitland** was named by an early community of settlers that planted fruit orchards on the banks of the Snake and Payette rivers. Stop and enjoy the Old Fruitland Park in historic downtown Fruitland.

**Parma** is located near the confluence of the Boise and Snake rivers. A full-size replica of Old Fort Boise (1834 - 1854) is located in Parma.

**Wilder** is known for many crops, especially hops grown for craft beers. Look for hops growing on high trellises. Visit the Wilder historic museum.

**Map Rock** is the most well-known petroglyph panel in Idaho. Petroglyphs are images carved, pecked, or incised into stone. It is commonly believed that the petroglyphs were created by the Shoshone-Bannock people prior to Euro-American contact.

**Greenleaf** is named for Quaker poet John Greenleaf Whittier. The quaint community was settled by Quakers in the early 1900s. Visit the Greenleaf historic museum.

**Sunnyslope** area enjoys ideal soil and weather conditions for bountiful orchards and a thriving wine industry.

**Walter's Ferry** is one of 23 historic ferry crossings of the Snake River. 1890 painting by Agnes Bowen.

**Byway Loop Routes**

See: [SnakeRiverCanyonScenicByway.org](http://SnakeRiverCanyonScenicByway.org)

- Requesting funds to develop and record information on historic sites on the tour. (Other sites will be funded by separate means.) Funds will also be used to place two interpretive signs along the Byway.
- SRCSB Board has pledged a match of \$9,750 for this project.

**Ranked Priority: LOW**

## Warhawk Air Museum

One application requesting to funds to create exhibits on the Global War on Terror-Iraq.

### Historic Preservation of Global War on Terror-Iraq Exhibits

Requested: \$10,000

Recommended: \$5,499

- The Warhawk Air Museum houses thousands of artifacts and features the histories of many Canyon County residents who have served their country. The Museum recently broke ground on an a new maintenance hangar, which will allow for the expansion of the museum space and the creation of new exhibits on the Global War on Terror.
- The Warhawk Museum had approximately 40,000 visitors in 2023, and hosted more than 8,300 students from 163 schools in Ada and Canyon Counties last year.
- Requesting funds to create exhibits that tell the stories of men and women who served in the Global War on Terror. Money will be used to fund research and design, and to purchase materials to construct display cases and mannequins.
- Warhawk Air Museum has pledged a match of \$10,000 for this application.



**RANKED PRIORITY: MEDIUM**  
*Recommend not funding labor*



**WARHAWK AIR MUSEUM**  
**CAPITAL CAMPAIGN**

**BENEFITING THE**  
**POST-9/11 AND GLOBAL WAR ON TERROR EXPANSION AND RENOVATION**

**OUR MISSION STATEMENT**  
TO EDUCATE VISITORS ABOUT THE COST OF FREEDOM  
AND HONOR THOSE WHO PAID ITS PRICE.

200-465-6440 | ADMIN@WARHAWKAIRMUSEUM.ORG | WARHAWKAIRMUSEUM.ORG

## The Secretary of the Interior's Standards for Rehabilitation

*Please note: For the [Historic Preservation Tax Incentives Program](#) use the [Standards for Rehabilitation](#) that are codified separately in 36 CFR 67 and are regulatory for the review of rehabilitation work for that program.*

The Standards will be applied taking into consideration the economic and technical feasibility of each project.

1. A property will be used as it was historically or be given a new use that **requires minimal change to its distinctive materials, features, spaces and spatial relationships.**
2. The historic character of a property will be retained and preserved. The **removal of distinctive materials or alteration of features, spaces and spatial relationships** that characterize a property will be avoided.
3. Each property will be recognized as a physical record of its time, place and use. Changes that create a false sense of historical development, such as adding conjectural features or elements from other historic properties, will not be undertaken.
4. Changes to a property that have acquired historic significance in their own right will be retained and preserved.
5. **Distinctive materials, features, finishes and construction techniques or examples of craftsmanship that characterize a property will be preserved.**
6. Deteriorated historic features will be repaired rather than replaced. **Where the severity of deterioration requires replacement of a distinctive feature, the new feature will match the old in design, color, texture and, where possible, materials. Replacement of missing features will be substantiated by documentary and physical evidence.**
7. Chemical or physical treatments, if appropriate, will be undertaken using the gentlest means possible. Treatments that cause damage to historic materials will not be used.
8. Archeological resources will be protected and preserved in place. If such resources must be disturbed, mitigation measures will be undertaken.
9. New additions, exterior alterations or related new construction will not destroy historic materials, features and spatial relationships that characterize the property. The new work will be differentiated from the old and will be compatible with the historic materials, features, size, scale and proportion, and massing to protect the integrity of the property and its environment.
10. New additions and adjacent or related new construction will be undertaken in such a manner that, if removed in the future, the essential form and integrity of the historic property and its environment would be unimpaired.

Information excerpted from the National Park Service website, <https://www.nps.gov/subjects/taxincentives/secretarys-standards-rehabilitation.htm>

June 14, 2024

To: Board of Canyon County Commissioners

From: Canyon County Historic Preservation Commission (HPC)

Re: Historic Preservation Fund FY2025 Grant Award Recommendations

The Historic Preservation Commission recommends funding \$134,679 in FY2025 to help with nine potential projects as follows:

Agency	Project	Amount Requested FY2025	Priority	Amount Recommended FY2025
American Legion Post 18*	Main Hall Sanctuary Ceiling and Stage Restoration	\$39,700	URGENT	\$39,700
Canyon County Historical Society*	Nampa Train Depot Museum Bathrooms Restoration Project	\$10,400	LOW	\$10,400
Historical Society of Middleton*	Lee Moberly Museum Door Repair and Gutter Addition	\$6,700	HIGH	\$6,700
Idaho Civil War Volunteers	Cannon Carriage for a Model 1841 Mountain Howitzer	\$8,300	LOW*	\$8,300
Melba Valley Historical Society*	Exterior Electrical Upgrade (#1)	\$4,450	MEDIUM	\$4,450
	Exterior Paint (#2)	\$9,500	HIGH	\$9,500
Nampa Valley Grange 131*	Nampa Valley Grange 131 Restoration Project (Year 1)	\$37,000	URGENT	\$37,000
Snake River Canyon Scenic Byway	Audio Tour/Signage of Historical Sites and Points of Interest on Byway	\$13,130	LOW	\$13,130
Warhawk Air Museum	Historic Preservation of Global War on Terror-Iraq Exhibits	\$10,000	MEDIUM (not funding labor)	\$5,499
<b>Total</b>		\$139,180		\$134,679

\*Building on the National Register of Historic Places\*

June 14, 2024

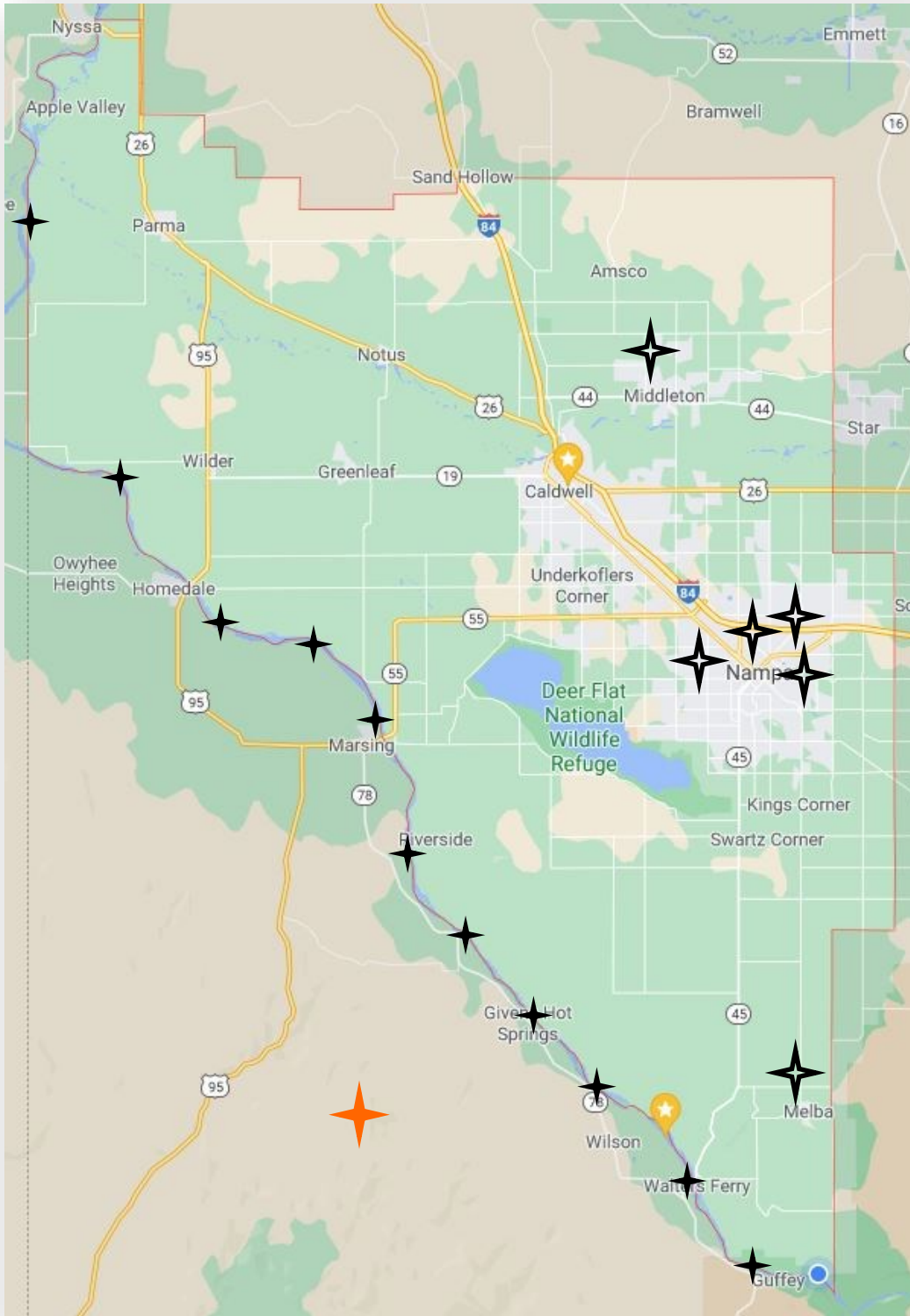
To: Board of Canyon County Commissioners

From: Canyon County Historic Preservation Commission (HPC)

Re: Historic Preservation Fund FY2025 Grant Award Recommendations

The Historic Preservation Commission recommends funding \$134,679 in FY2025. Funding falls into these four priority categories.

		<b>Amount Requested</b>	<b>Amount Recommended</b>
	<b>Urgent Priority Projects</b>	\$76,700	\$76,700
	<b>High Priority Projects</b>	\$16,200	\$16,200
	<b>Medium Priority Projects</b>	\$14,450	\$9,949
	<b>Low Priority Projects</b>	\$31,830	\$31,830
	<b>Total</b>	\$139,180	\$134,679



### Nampa

- American Legion Post 18
  - Main Hall Sanctuary and Stage Restoration
- Canyon County Historical Society
  - Nampa Train Depot Museum Exterior Brick and Stone Cleaning Project
- Nampa Valley Grange
  - Nampa Valley Grange 131 Restoration
- Warhawk Air Museum
  - Global War on Terror-Iraq Exhibits

### Middleton

- Historical Society of Middleton
  - Museum Door Repair and Gutter Addition

### Melba

- Melba Valley Museum
  - Exterior Electric Upgrade
  - Exterior Paint

### Multiple Locations

- Snake River Canyon Scenic Byway
  - Audio Tour/Interpretive Signs

### Mobile Project

- Idaho Civil War Volunteers
  - Cannon Carriage