

Canyon County Prosecuting Attorney

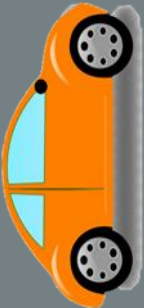


Idaho Const. Art. V, §18

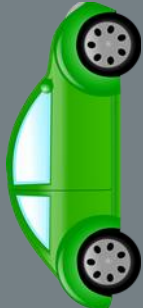
“A prosecuting attorney shall be elected for each organized county in the state, by the qualified electors of such county, and shall hold office for the term of two years, and commencing with the general election in 1984 shall hold office for the term of four years, and shall perform such duties as may be prescribed by law; he shall be a practicing attorney at law, and a resident and elector of the county for which he is elected. He shall receive such compensation for services as may be fixed by law.”

County Government (7 lane highway)

Treasurer



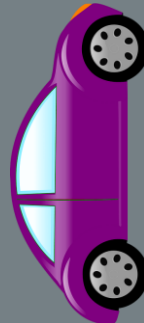
Assessor



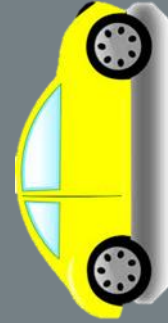
Sheriff



Clerk



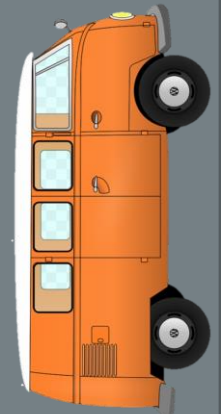
Coroner



PA



BOCC



HOV

Duties Prescribed by Law

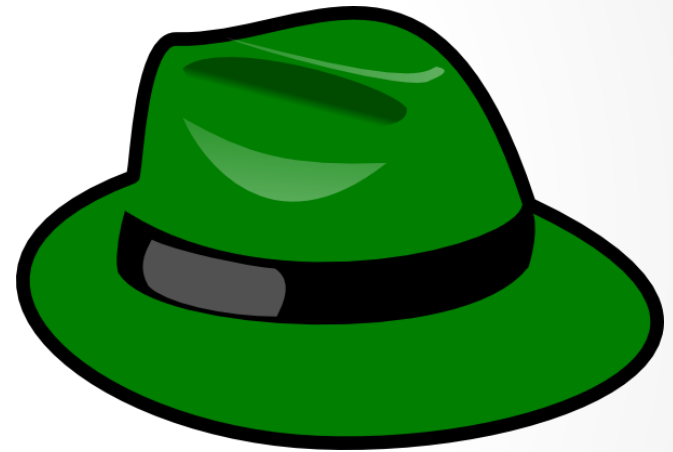
Idaho Code Title 31, Chapter 26

- Prosecute criminal defendants
- Assist victims of crimes
- Improve the community
- Assure public safety
- Work closely with law enforcement
- Provide legal counsel to County officials
- Perform all other duties required of him by law

Two Hats

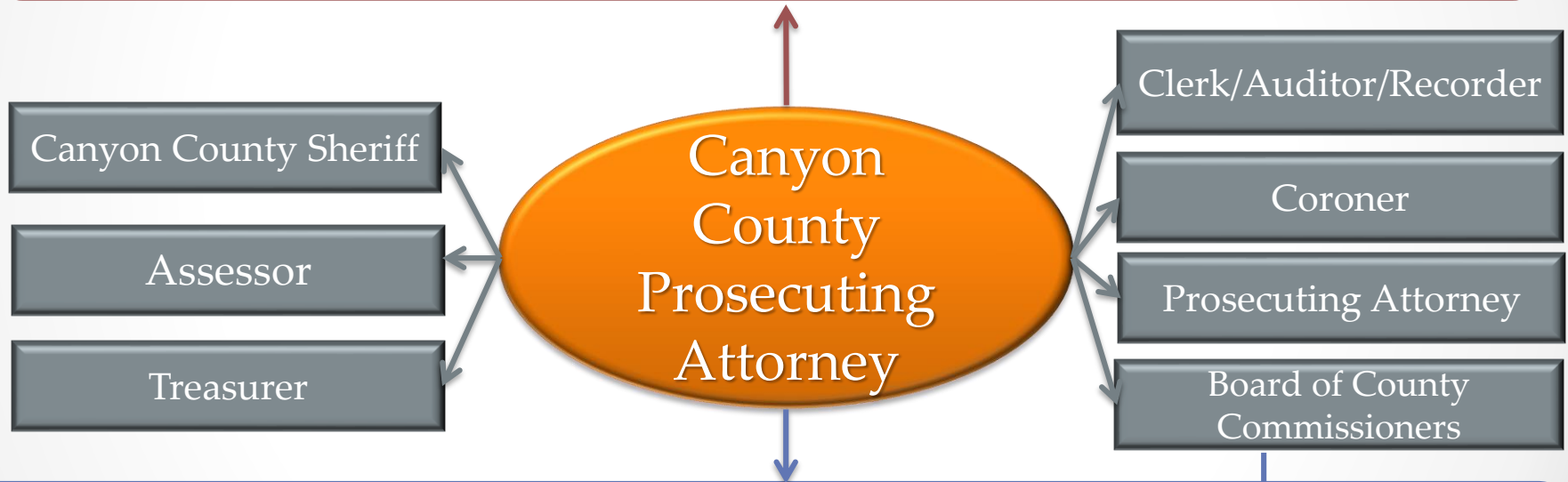


Civil



Criminal

Civil Division



Civil Duties

- Contracts
- Employment
- Land Use
- Civil Litigation
- Jail
- Public Records

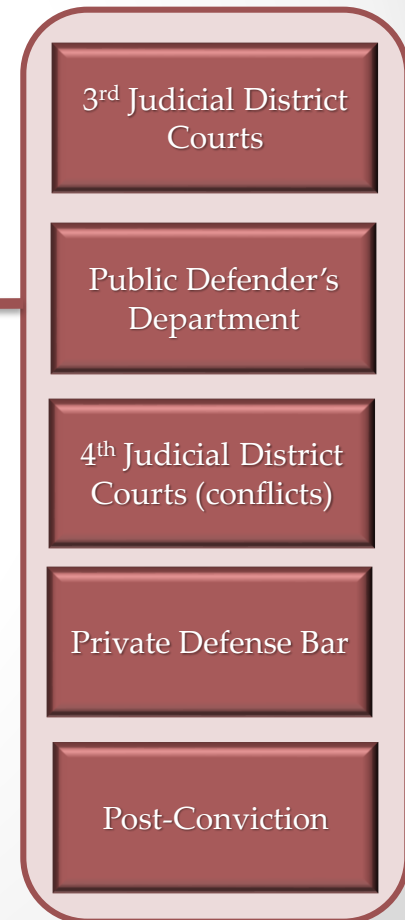
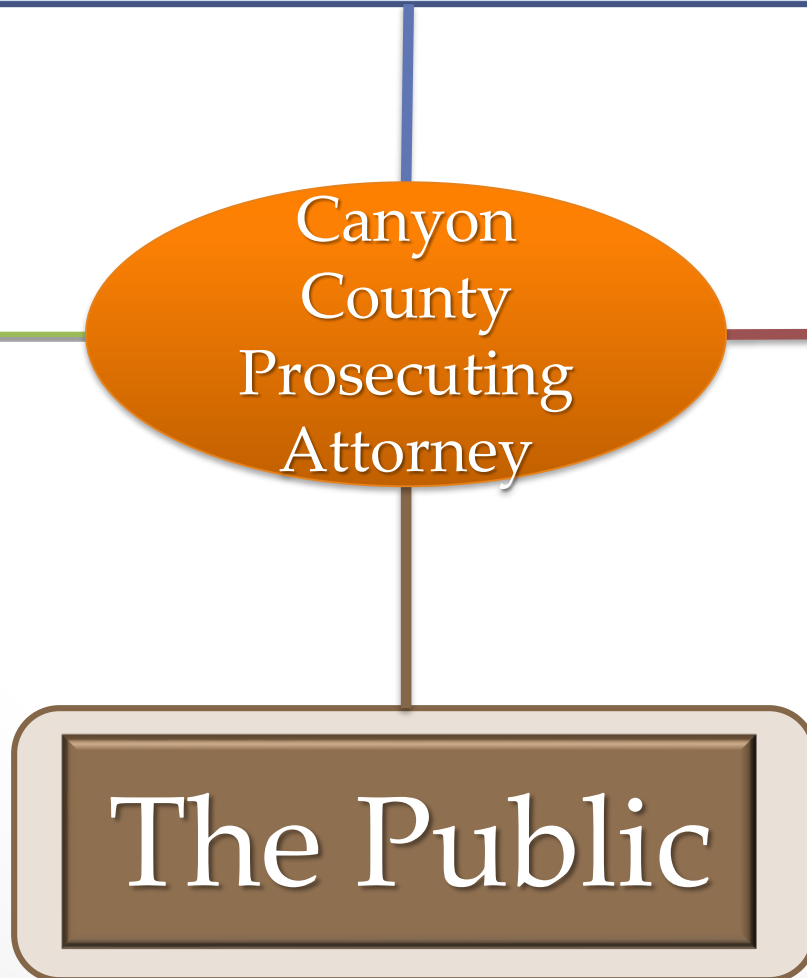
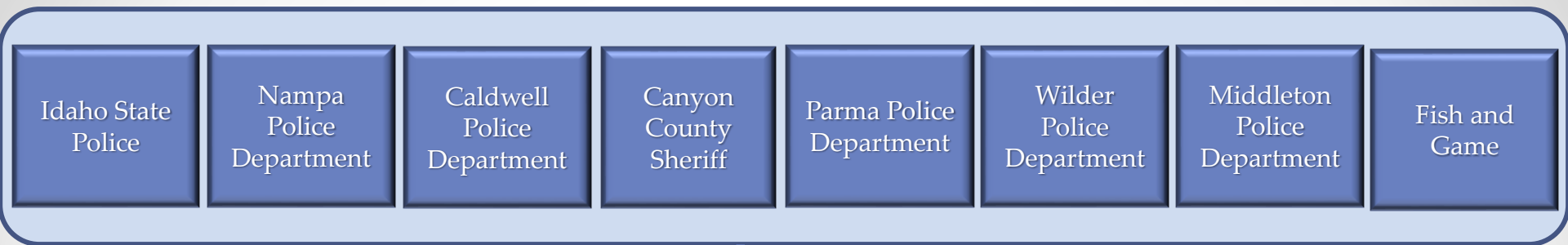
Prosecuting Attorney

- Is the county's attorney – meaning all elected officials in their official capacity are represented by legal counsel.
- County Officials must come to the PA for legal advice unless the PA authorizes for outside counsel.

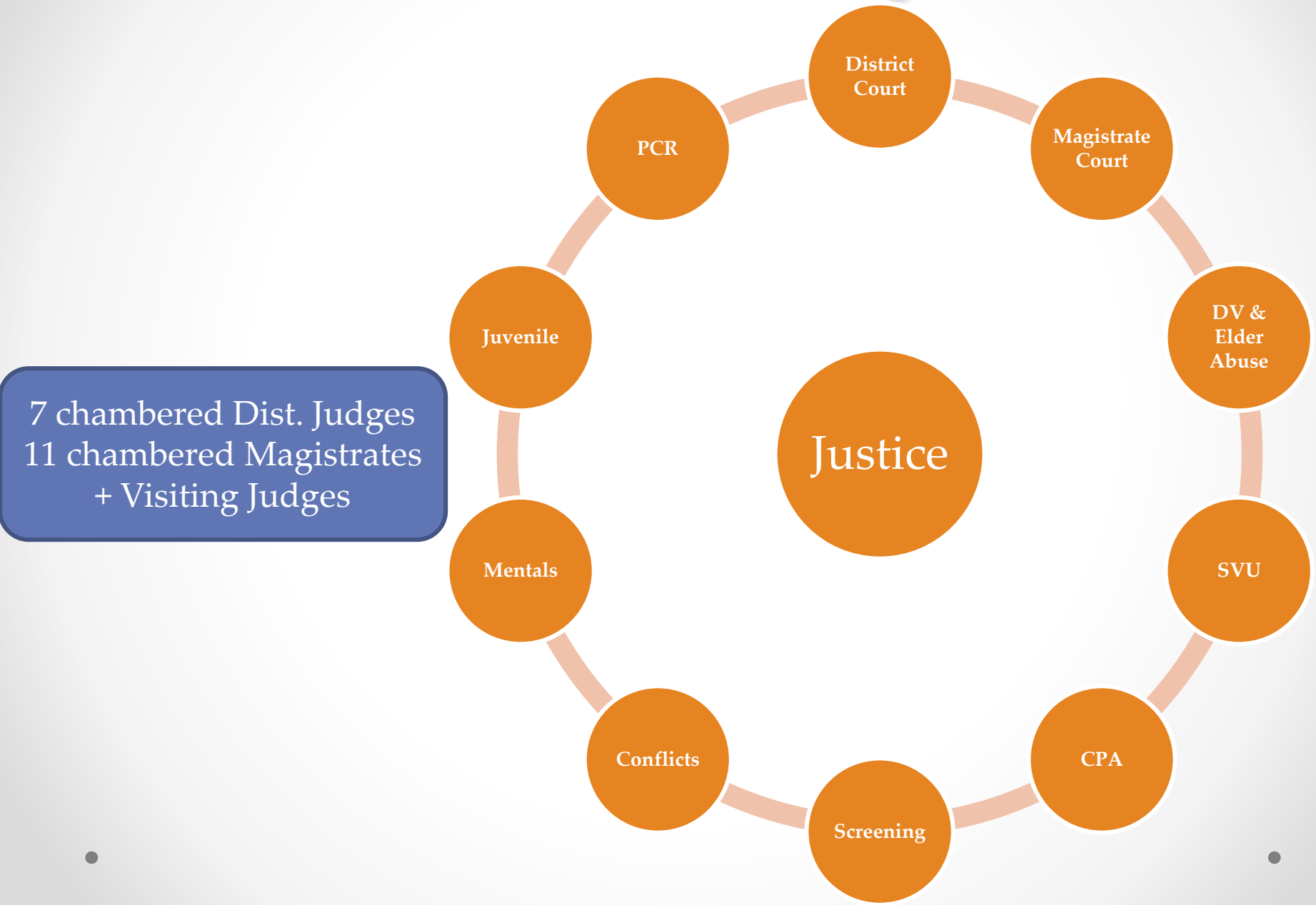
I.P.R.C. 4.2

In representing a **client**, a lawyer shall not communicate about the subject of the representation with a person the lawyer knows to be represented by another lawyer in the matter, unless the lawyer has the consent of the other lawyer or is authorized to do so by law or a court order.

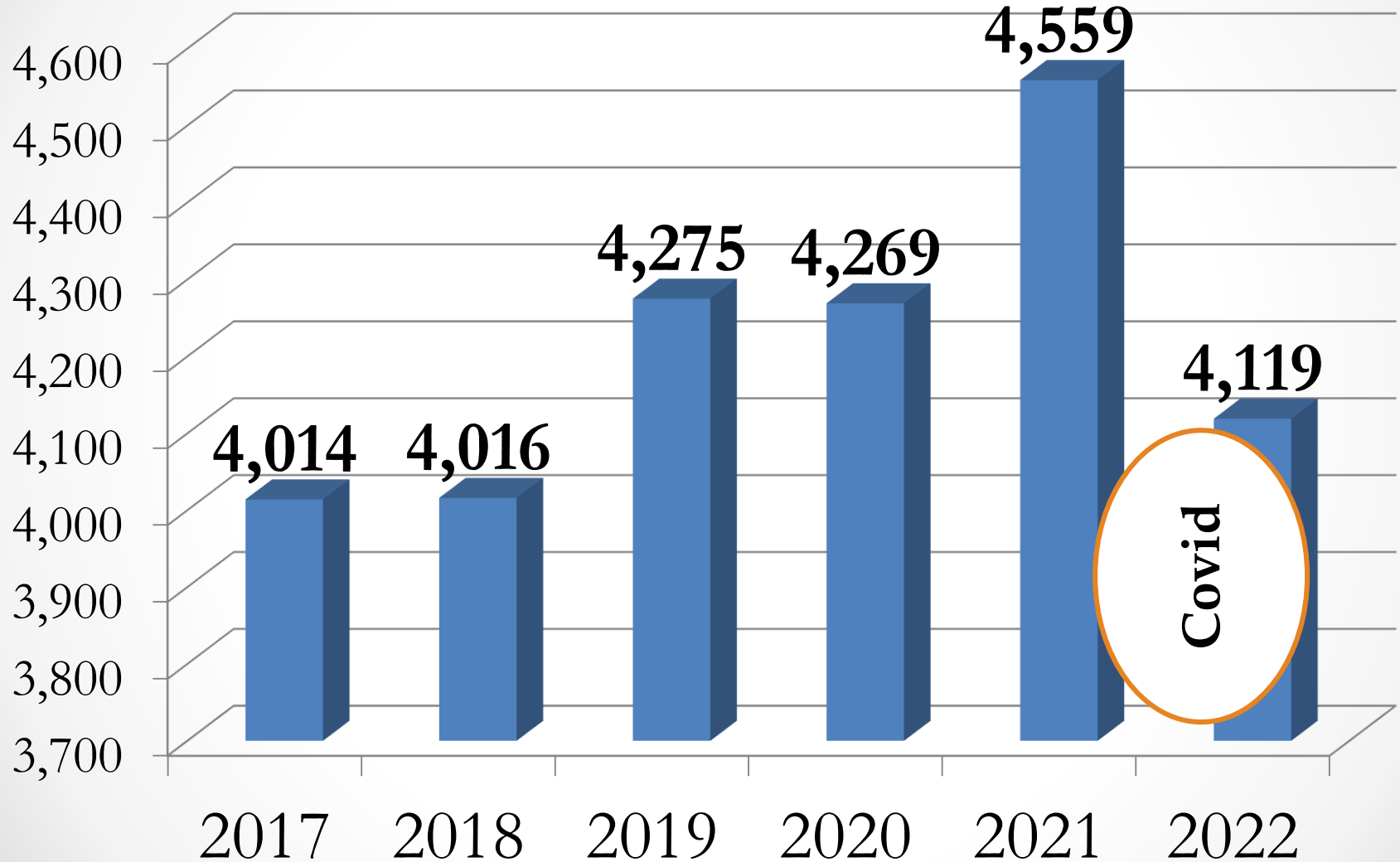
Criminal Division



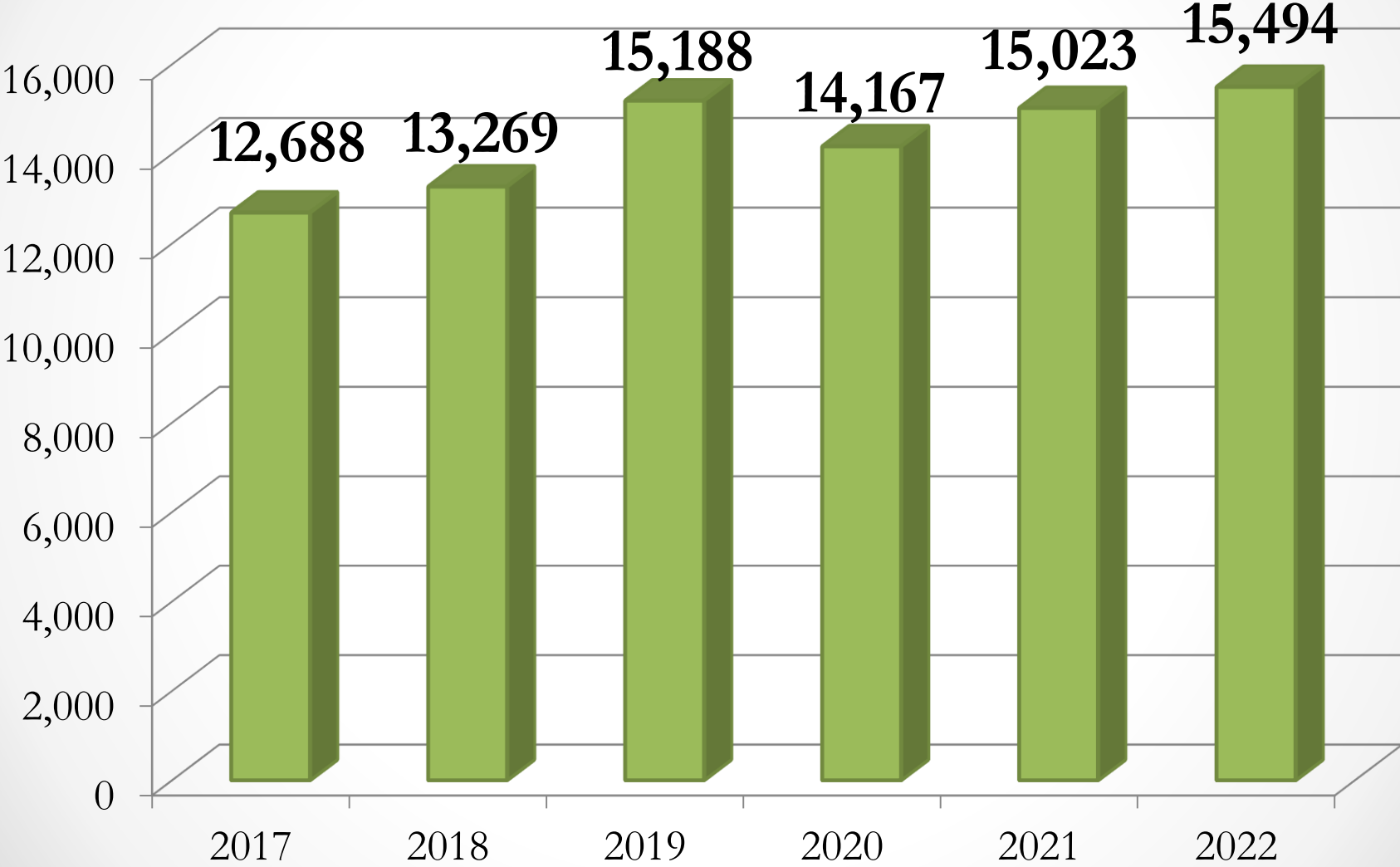
Criminal Division Operations



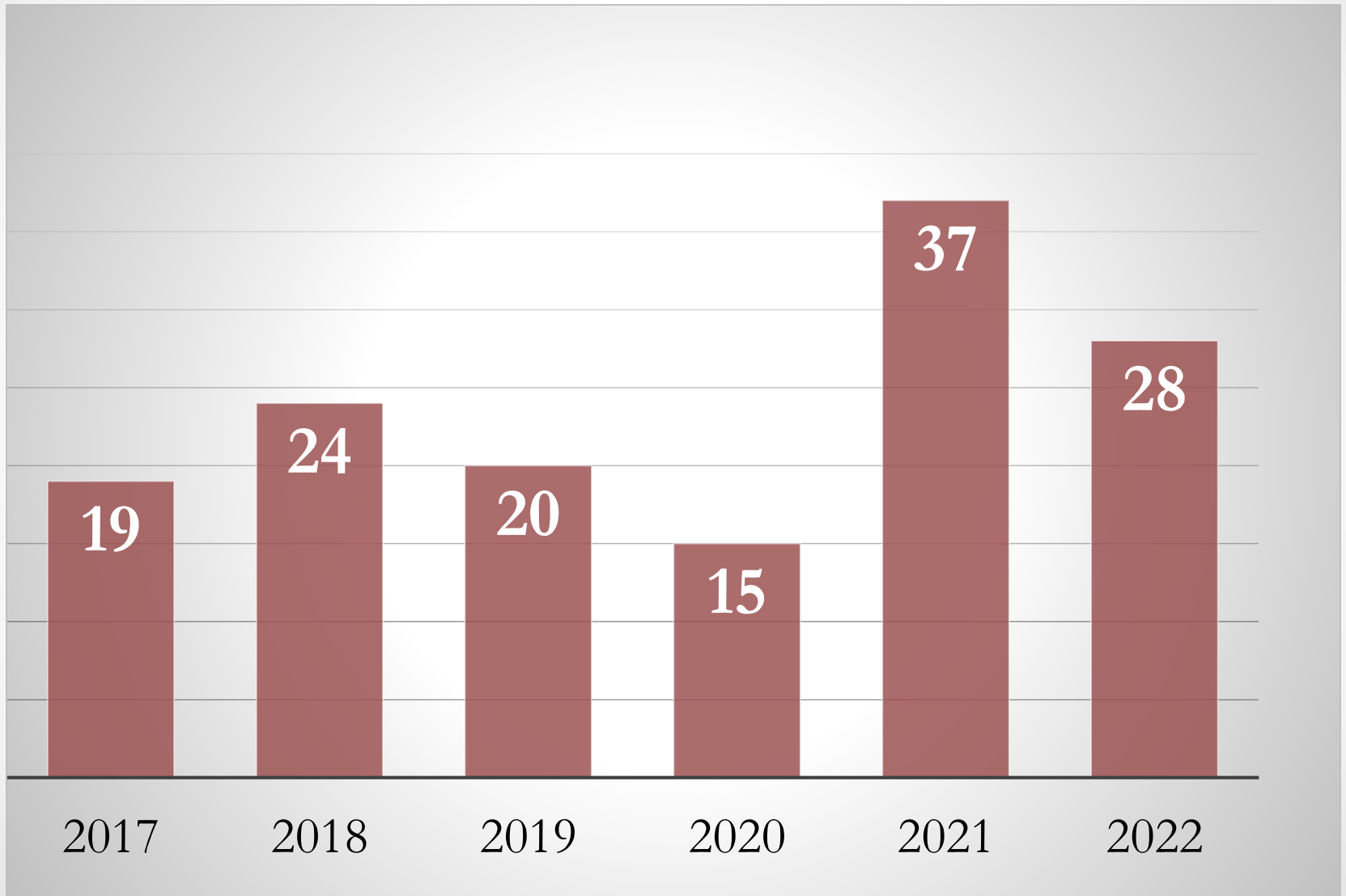
Felonies handled



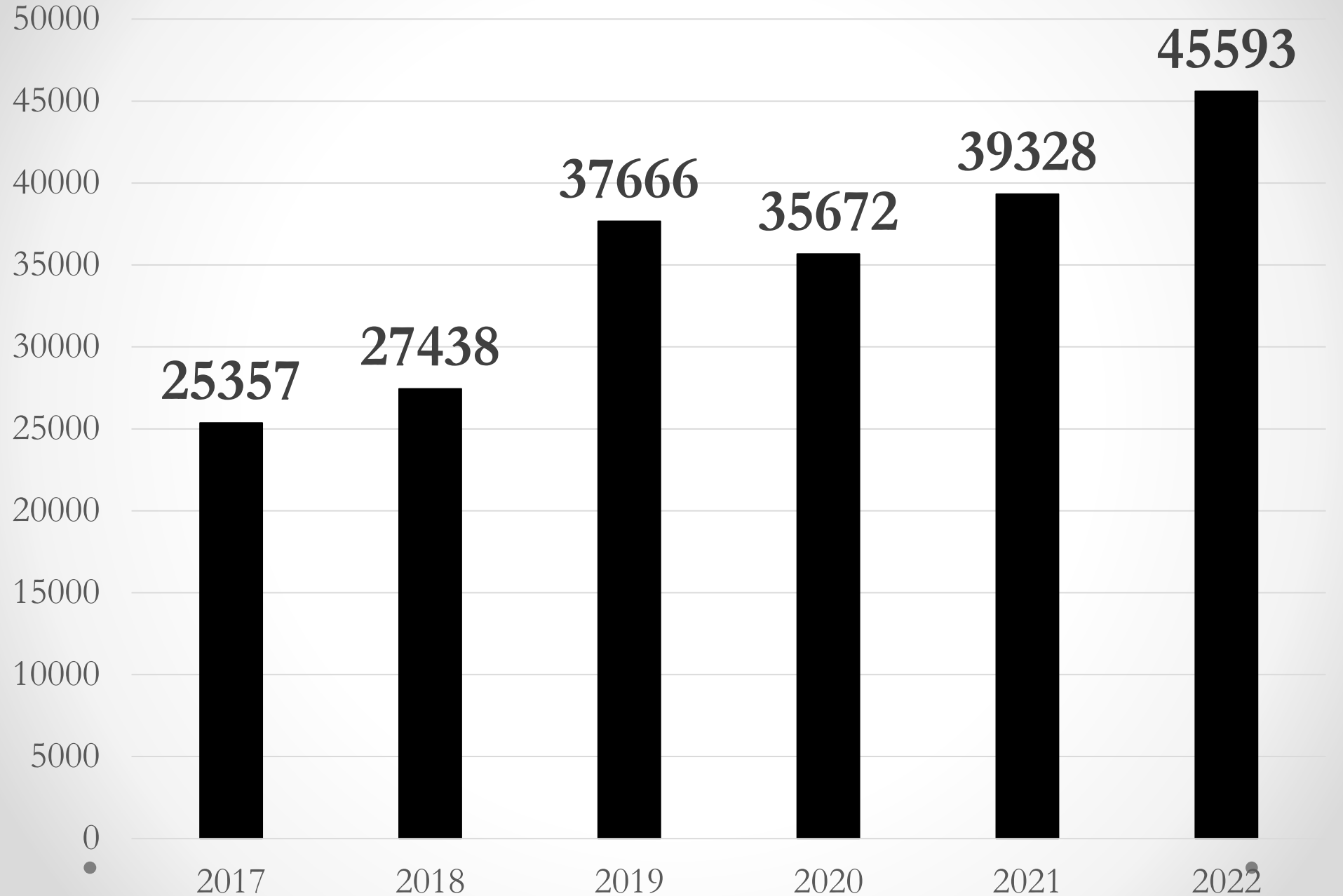
Misdemeanors handled



Homicides



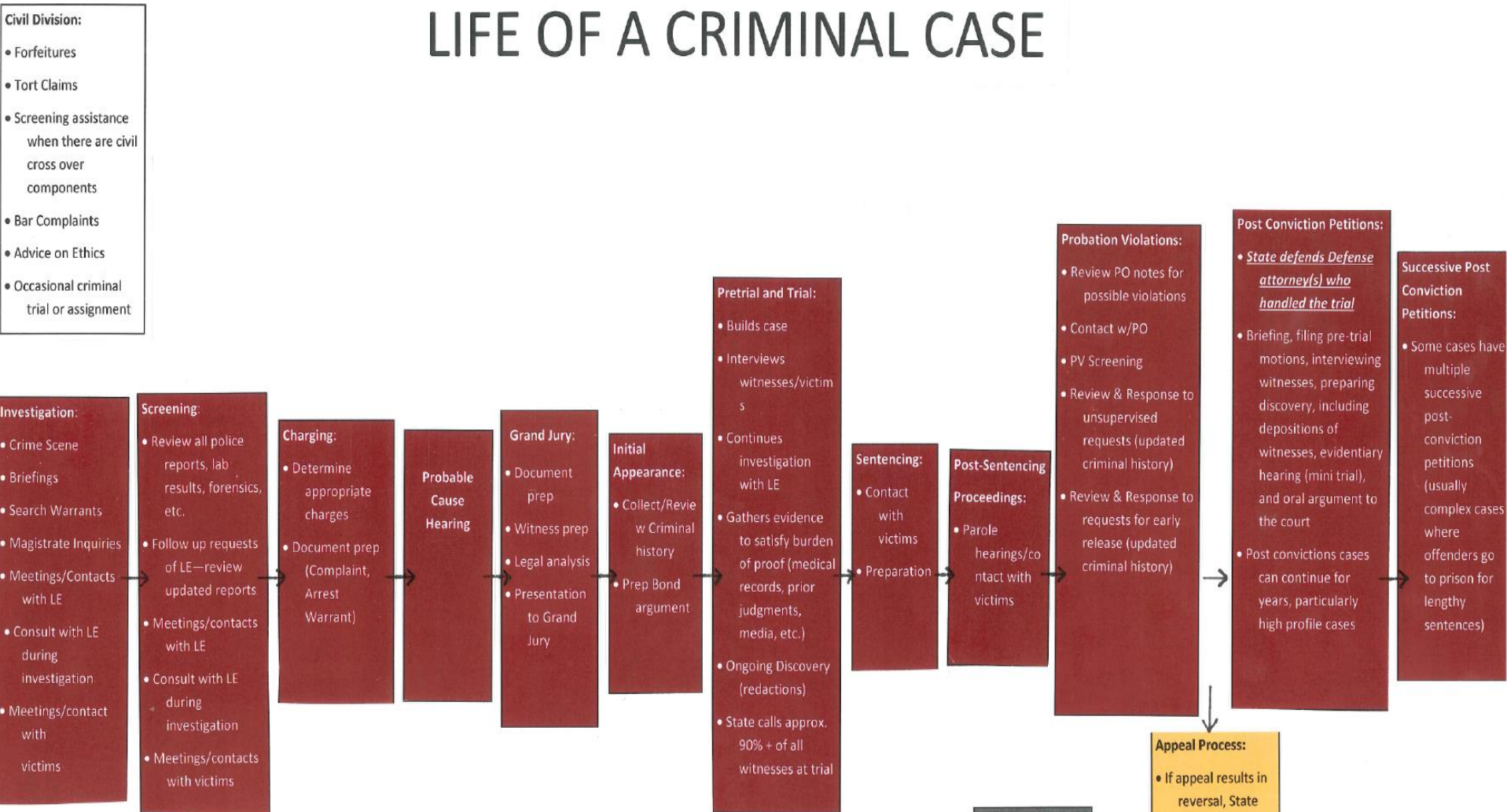
VWC Combined Case Actions



Comparison

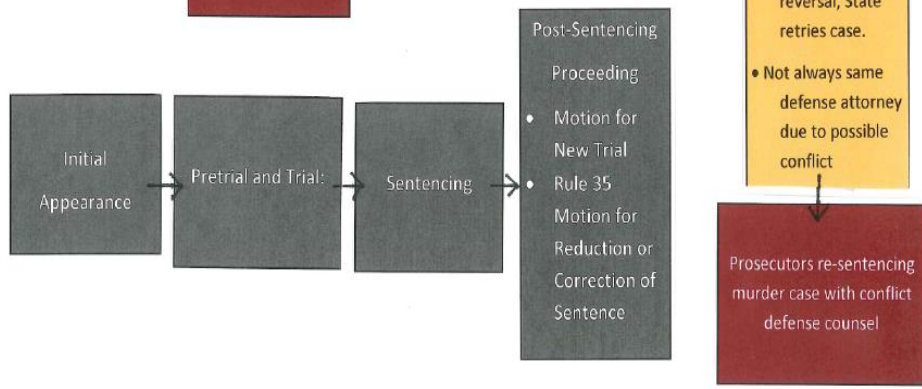


LIFE OF A CRIMINAL CASE



KEY

Prosecutorial Functions
Defense Counsel Functions
Civil Division
Neither Prosecutor or Public Defender

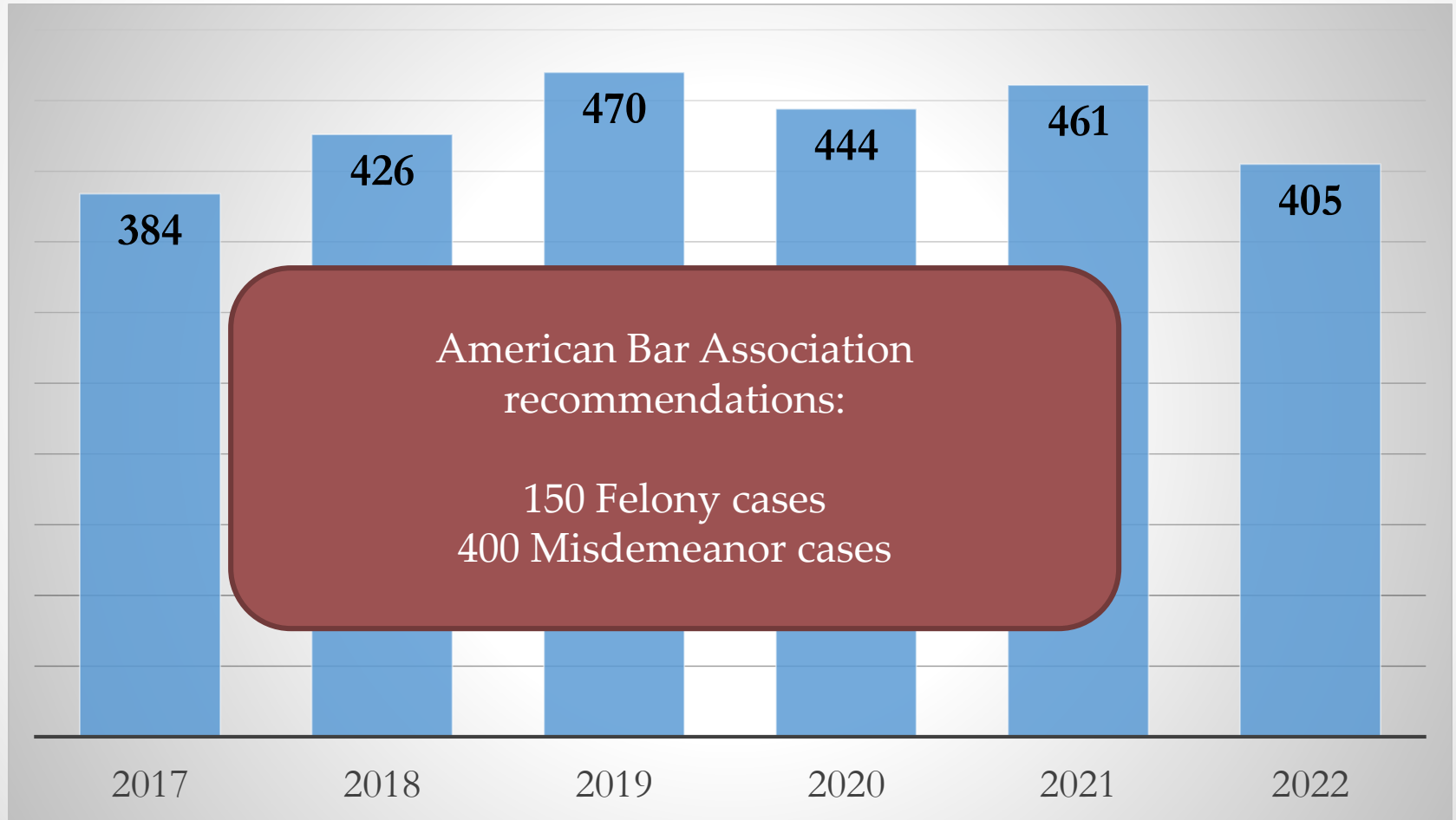


ABA standard 3, 1.8

(a) The prosecutor should not carry a workload that, by reason of its excessive size or complexity, interferes with providing quality representation, endangers the interests of justice in fairness, accuracy, or the timely disposition of charges, or has a significant potential to lead to the breach of professional obligations. A prosecutor whose workload prevents competent representation should not accept additional matters until the workload is reduced, and should work to ensure competent representation in existing matters. A prosecutor within a supervisory structure should notify supervisors when counsel's workload is approaching or exceeds professionally appropriate levels.



Average caseload PA deputy



Case number comparison

