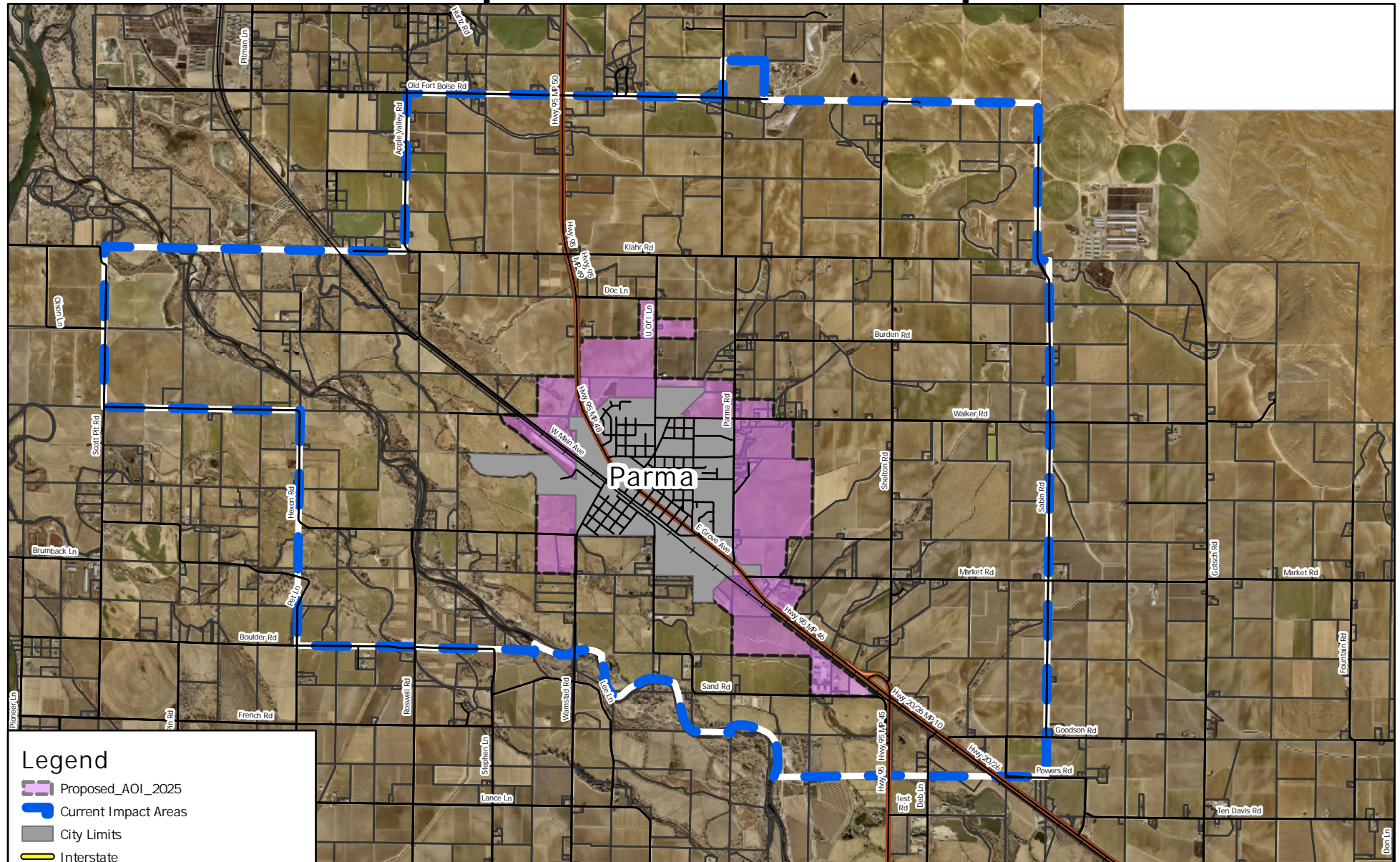


Proposed Parma Area of Impact



Legend

- Proposed_AOI_2025
- Current Impact Areas
- City Limits
- Interstate
- Highway
- Roads
- Rail



0 1 2
Miles

DISCLAIMER: CANYON COUNTY MAKES NO WARRANTY WITH RESPECT TO THE ACCURACY, COMPLETENESS, OR USEFULNESS OF THESE MAPS. CANYON COUNTY ASSUMES NO LIABILITY FOR DIRECT, INDIRECT, SPECIAL, OR CONSEQUENTIAL DAMAGES RESULTING FROM THE USE OR MISUSE OF THESE MAPS OR ANY OF THE INFORMATION CONTAINED HEREIN. PORTIONS MAY BE COPIED FOR INCIDENTAL USES, BUT MAY NOT BE RESOLD. THIS MAP HAS NOT YET BEEN APPROVED BY THE BOARD OF COUNTY COMMISSIONERS.

REVISED: Date: 11/5/2025 - TAlmeida

Document Path: O:\GIS\SDS_GIS_Projects\ImpactArea2025\CitiesAreaOfImpact2025\CitiesAreaOfImpact2025.aprx

